

GOOD FOR CONSTRUCTION

REINFORCEMENT SCHEDULE OF DECK SLAB

BAR MARK	NO. OF BAR	SPACING/NO.	SHAPES
1	16	200 c/c	
2	16	200 c/c	
3	16	200 c/c	
4	16	200 c/c	
5	10	150 c/c	
6	10	150 c/c	
7	10	150 c/c	
8	12	150 c/c	
9	10	150 c/c	
10	10	150 c/c	
11	10	150 c/c	
12	12	200 c/c	
13	12	200 c/c	
14	12	200 c/c	
15	10	3 Nos	
16	10	2 Nos	

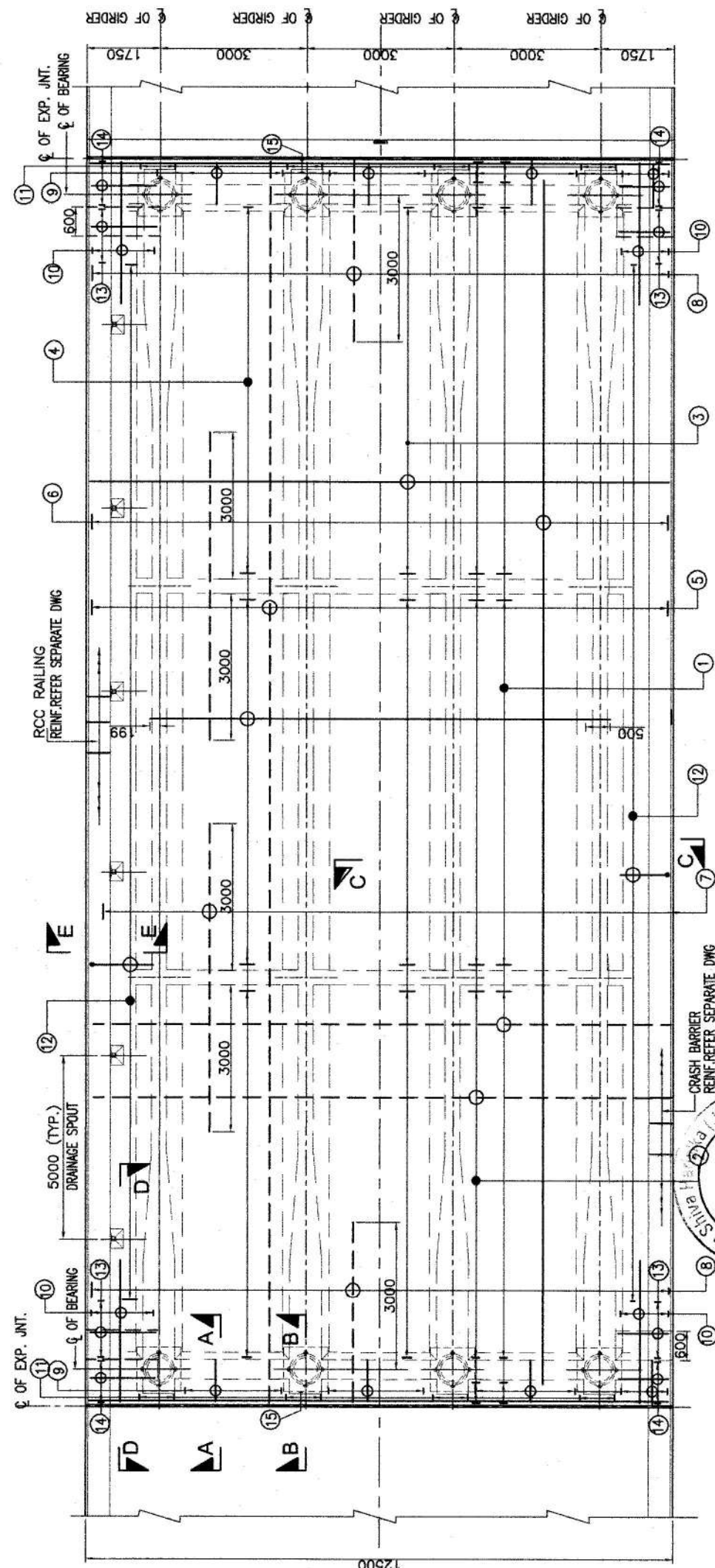
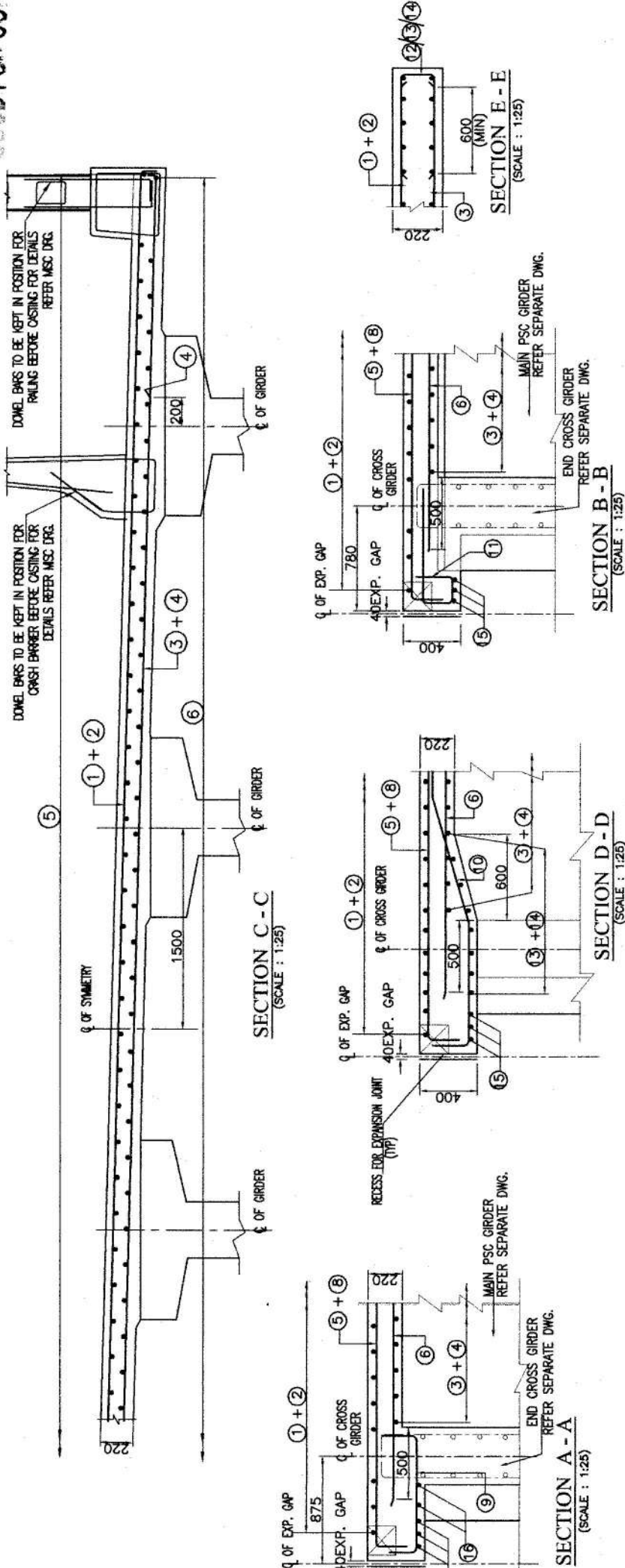
NOTES:

1. ALL DIMENSIONS ARE IN MILLIMETRES, UNLESS OTHERWISE SPECIFIED.
2. GRADE OF CONCRETE FOR DECK SLAB - M50
3. GRADE OF STEEL - F460
4. CLEAR COVER TO MAIN REINFORCEMENT OF 40mm BE 54d, WHERE d IS SMALLER DIAMETER OF BAR.
5. SPLICING OF BARS SHALL BE DONE AS PER IS:112-2020.
6. MINIMUM ANCHORAGE LENGTH SHALL BE 36d WHERE d IS DIA OF BAR.
7. FOR REINFORCEMENT DETAIL OF CRASH BARRIER, REFER SEPARATE DRAWING.
8. FOR REINFORCEMENT DETAIL OF STRENGTH EXPANSION JOINT (40mm GAP), REFER SEPARATE DRAWING.

LEGEND:

--- TOP REINFORCEMENT
--- BOTTOM REINFORCEMENT
LV --- LENGTH VARIES

Bridge Engineer
VSPL, Sivasagar



REINFORCEMENT DETAILS OF DECK SLAB (SCALE: 1:75)

DRG. NO. NHID/JKS/UA/MB/523-27/1/DECK-01

DATE: MAR. 2023

REVISION: R0

APPROVED

CHECKED

DESIGNED

PREPARED

AS SHOWN

SCALE:

SAFETY CONSULTANT:

DESIGN DIRECTOR:

CONTRACTOR:

CLIENT:

PROJECT:

FOUR LANE OF JHARKHAND
DEVELOPMENT FROM NH-491
491+050 TO 535+250 (DESIGN KM)
480+000 TO 534+800 (OF NH-37)
IN THE STATE OF ASSAM UNDER
SARDP ON ENGINEERING

CONTRACTOR:

M/S KANTAC ENGINEERS PVT. LTD.

M/S KANTAC ENGINEERS PVT. LTD.

M/S KANTAC ENGINEERS PVT. LTD.

REINFORCEMENT DETAILS OF RCC DECK
SLAB OF MAJOR BRIDGE AT CH. 529+271